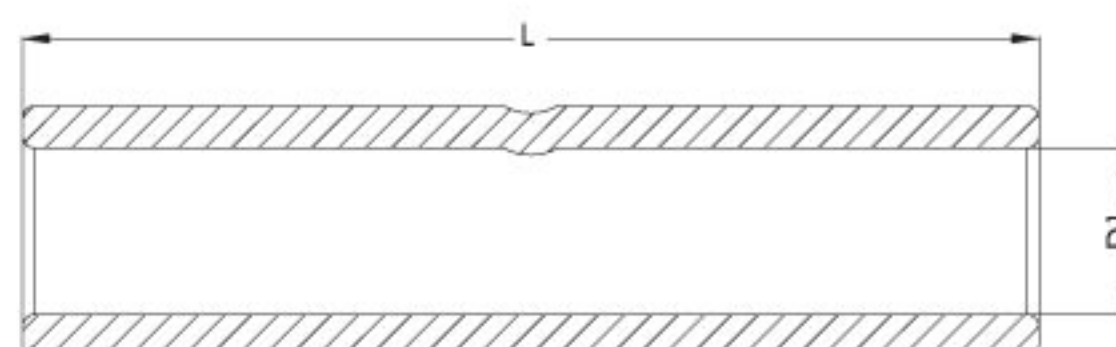




Standard Copper Connectors



- Tube : Seamless, one piece tube
- Material : Electrolytic tough pitch copper
- Conductivity : High conductive 99.9% E.T.P
- Finish : Tin plated to assure maximum conductivity
- Identification : Conductor size is marked on every piece
- Tube Manufacturing : In compliance with DIN EN 13600.
- Positive cable stops ensure proper insertion of conductors to full depth.

Code	Conductor Size mm ²	D1	L
SSCC 6/25	6	3.8	25
SSCC 10/30	10	4.5	30
SSCC 16/35	16	5.5	35
SSCC 25/40	25	6.8	40
SSCC 35/45	35	8.2	45
SSCC 50/50	50	9.5	50
SSCC 70/55	70	11.2	55
SSCC 95/60	95	13.4	60
SSCC 120/65	120	15.0	65
SSCC 150/70	150	16.5	70
SSCC 185/80	185	19.0	80
SSCC 240/90	240	21.0	90
SSCC 300/100	300	23.5	100
SSCC 400/110	400	27.0	110
SSCC 500/140	500	31.0	140
SSCC 630/160	630	34.0	160

- All dimensions in mm.
- Other dimensions, shapes or sizes are available upon request.
- Due to continuous product improvement, some specifications could be changed without notice.

SSCC/R3-0513